

MINUTES

Meeting: SALISBURY AREA BOARD
Place: Alamein Suite - City Hall, Malthouse Lane, Salisbury, SP2 7TU
Date: 17 May 2018
Start Time: 7.00 pm
Finish Time: 9.00 pm

Please direct any enquiries on these minutes to:

Lisa Moore (Democratic Services Officer), Tel: 01722 434560

or (e-mail) lisa.moore@wiltshire.gov.uk

Papers available on the Council's website at www.wiltshire.gov.uk

In Attendance:

Wiltshire Councillors

Cllr Mary Douglas (Chairman), Cllr Derek Brown OBE (Vice-Chairman),
Cllr Brian Dalton, Cllr Matthew Dean, Cllr Sven Hocking, Cllr Atiqul Hoque,
Cllr Ricky Rogers and Cllr John Walsh

Wiltshire Council Officers

Karen Linaker, Salisbury Community Engagement Manager
Lisa Moore, Democratic Services Officer

Town and Parish Councils

Laverstock and Ford Parish Council – V Bussereau

Partners

Wiltshire Police – Inspector Pete Sparrow
Dorset & Wiltshire Fire and Rescue – Jason Moncrieff

Total in attendance: 28

<u>Agenda Item No.</u>	<u>Summary of Issues Discussed and Decision</u>
87	<p><u>Welcome and Introductions</u></p> <p>The Chairman, Councillor Mary Douglas welcomed everyone to the meeting of the Salisbury Area Board.</p>
88	<p><u>Apologies for Absence</u></p> <p>Apologies for absence had been received from:</p> <ul style="list-style-type: none"> • The speakers for Item 10 - James Plumley and Ben Huggins.
89	<p><u>Minutes</u></p> <p><u>Decision</u> The minutes of the meeting held on Thursday 15 March 2018 were agreed as a correct record and signed by the Chairman.</p>
90	<p><u>Declarations of Interest</u></p> <p>The following declarations were received:</p> <ul style="list-style-type: none"> • Cllr Rogers noted a pecuniary interested in relation to item 12 Community Grants – application from Studio Theatre, as his building company was the main contractor for the project. He opted to leave the room during for this application, and did not take part in the discussion or the vote. • Cllr Atiqul Hoque noted a non-pecuniary interest in relation to item 12 Community Grants – application from the Any Body Can Cook Community Interest Company, as he had a takeaway food shop on the same road as the proposed shop. He did not take part in the vote on this application.
91	<p><u>Chairman's Updates</u></p> <p>The Chairman made the following announcements:</p> <p><u>Salisbury Recovery Update</u> The written update attached to the agenda included information on:</p> <ul style="list-style-type: none"> • Salisbury to host the grand final of the elite cycling OVO Energy Tour Series on May 31. Further information about the event was available at: www.wiltshire.gov.uk/salisbury-cycle-tour-series • A dedicated webpage providing up to date information on what was happening in Salisbury had been set up and could be viewed at:

www.wiltshire.gov.uk/salisbury.

- Changes to the free parking in Salisbury would come in to effect on 14 May 2018. It would remain free in Wiltshire Council's car parks from midday, Monday to Friday and all day on Saturday and Sundays.
- The recovery was moving fast, with no further reports of illness reported.
- The clean-up stage of the recovery was well under way. Nine sites were identified as potentially contaminated.

Rough Sleepers

This had been an area of concern, Cllrs had met with charities working on the frontline as well as council officers and cabinet members. The more conversations we have the more aware we are that the issue is complex. There are many different reasons for people to sleep rough and each person needs a different approach. The overwhelming concern was for the wellbeing for those rough sleepers.

Cllr Clewer – as Cabinet member for Housing, he noted that there was a lot of work going on with the rough sleepers. Initially there were six people sleeping rough under the Maltings, but then others started to join them, to drink and take other substances. There are now only three as we have managed to work with some of them to provide solutions to for those people. Work was ongoing.

92

Information items

The Board noted the following written information items attached to the agenda:

- Healthwatch Wiltshire Update
- Clinical Commissioning Group Update
- Gypsies & Travellers Dairy House Bridge Site Transfer of Ownership Engagement Process.

A question was asked regarding the Gypsies and Travellers site transfer paper, by a resident on the site. They had been told for 4 years that the site would be improved, but after 4 years they were then told it would be sold. If that was a private sale, what would happen after 12 months to those living on the site?

The Chair thanked the questioner and referred the question to Cllr Clewer as the Cabinet Member present.

Answer: Cllr Clewer noted that Cllr Sturgis was the Cabinet member for this service, however, if the Council found a buyer for the site, it would still have to remain as a traveller site permanently. The Council had been trying to do the sites up but with the level of grants available, there was not enough in the pot to do these up effectively.

	<p>The resident noted that the buyer would more than likely be another group of travellers who would buy these sites.</p> <p>Cllr Clewer strongly urged those affected to respond to the consultation, that was open for them to make their views and concerns known. They could also attend the Cabinet meeting on July 3rd to speak at that meeting.</p> <p>Cllr Walsh noted that the local Wiltshire Councillor for the site was Cllr Hocking, he would contact the Cabinet Member to discuss the matter.</p>
93	<p><u>Electoral Review</u></p> <p>Under his role of Chairman of the Electoral Review Committee, Cllr Richard Clewer gave an update on the Review of the Local Government Boundary Commission. A written handout was circulated at the meeting and is attached to these minutes for information.</p> <p>Electoral Reviews determine both the overall number of councillors on a council, and the pattern of divisions within that council. The current review would be the first review since Wiltshire Council was formed in 2009.</p> <p>It was required because 25 Divisions had a variance from the average in the size of their electorate of more than 10%, and 2 Divisions had a variance from the average of over 30%.</p> <p>The review's outcome, if implemented, would apply from the next elections in May 2021. Parliament, not Wiltshire Council, would be responsible for the final decision, following a recommendation from the Local Government Boundary Commission for England (LGBCE).</p> <p>The councils Electoral Review Committee considered a great deal of evidence and recommended to Full Council that a council size of 99 Councillors be put forward, to enable us to keep the area boards working.</p> <p>The implications of having fewer councillors could be quite significant for some of our areas.</p> <p>We were told we would have a decision on 1st May, instead they have come back and said they are unsure and would like to talk further about the Area Board arrangements.</p> <p>Once we have been informed of what the number of councillors in Wiltshire council from the next election will be, the LGBCE will hold a public consultation.</p> <p>The consultation will seek proposals from the council, towns and parishes, other community or local groups, and members of the public, on how the determined number of divisions should be drawn up.</p>

	<p>Cllr Clewer encouraged everyone to put submissions in and engage in the process.</p> <p>One key issue for the community area would be the impact to Bishopdown Farm, that may end up as two divisions. Bemerton might also be too large as one division.</p> <p>All submissions would be put in for consideration by the Secretary of State.</p> <p>It was hoped that the decision on the final number of Councillors would be known in September.</p> <p>It would go to parliament to make the final decision.</p> <p>Cllr Clewer urged the two councils here to be fully engaged with the consultation process.</p> <p>A parish briefing would take place, possibly on 14th June, however the date was yet to be confirmed.</p> <p>Once this process was finished, if any parish wished to put forward ideas for a change of boundary, Wiltshire Council would then consider that.</p> <p><u>Questions</u></p> <ul style="list-style-type: none"> • Cllr Hoque - What is your prediction for the number of Cllrs? <u>Answer:</u> If you look across the country, the tendency was to cut numbers. They were however willing to consider suggestions. • Was there a precedent of having one division and two representatives? <u>Answer:</u> Wiltshire Council had the option to support that or not, we did not want that option. We will be remaining as single Member divisions. • Cllr Dalton - Here we go again. If the number of Councillors are to be cut, there was no way they would support 99. I would expect it to end up more like 70 – 85. I hope Harnham gets reunited again. • Cllr Rogers – I am pleased Cllr Clewer is leading on this. Last time in 2009, we got the numbers wrong, ended up with one ward where the number was incorrect.
94	<p><u>Local Youth Network (LYN)</u></p> <p>Lead Member for Youth, Cllr Derek Brown gave an update on behalf of the LYN.</p>

The LYN had met at Sarum Academy earlier in May to consider grant applications. They commented that many of the applications that were brought to them were outside of the criteria age group of 11 to 18, as they were for 0 – 5 years. They also asked for future applications to be graded more carefully so that they met the criteria.

The Board then considered the recommendations for youth funding, as detailed in the report attached to the agenda.

Following discussion, the Members voted on each application.

Decision

The Salisbury Area Board awarded £830 to Wiltshire Cricket for the All Stars Cricket sessions for Bemerton Heath.

Reason

The application met the criteria for Youth Funding for 2018/19.

The Chairman noted that the LYNs recommendation for the next application had been to refuse due to the age group of the young people involved. It was then recommended that the Board swapped revenue for capital to enable the Board to fund the project.

Cllr Dean noted that this was a community Group which was doing great work, however he asked whether they were able to draw the boundary further to include other areas of Salisbury other than just the Friary.

Answer: This is a specific project focused only on the Friary. We do support generally families across the old Salisbury district area. So we do work with all areas of Salisbury under different funding streams.

The Community Engagement Manager clarified that this project had arisen from the decision of the Child and Wellbeing Group to focus on the Friary, with a view to looking wider after they had done that piece of work.

Cllr Rogers seconded the proposal to switch funding from the two budgets to enable this project to be funded. This type of intervention work was really beneficial to those receiving the help. It was life changing.

Decision

The Salisbury Area Board awarded £3,712.50 to Home Start South Wiltshire for the Reaching Out Project.

Reason

The funding was a capital/revenue swap between the Community Grant pot and the LYN. The LYN will be informed of this.

Decision

The Grant to the Wiltshire Racial Equality Council for the Open Blue Bus Day Out to Salisbury was funded by the Health and Wellbeing Budget.

Reason

	<i>The project did not meet the Youth Funding.</i>
95	<p><u>Partner and Community Updates</u></p> <p>The Board noted the written updates attached to the agenda and received the following verbal updates:</p> <p><u>Salisbury City Council (SCC) – Cllr Matthew Dean</u></p> <ul style="list-style-type: none"> • SCC was a major sponsor of ‘Salisbury Live’ which hosted a series of over 200 music gigs across the city. • There had been an improved change in the cleanliness of the city, with the introduction of the new kit which was now operational. Having focused on the city centre since May, we would be moving out to the suburbs next. • SCC was currently going through a staffing review, to reflect its business plan and priorities. • Making steps to support a number of community groups and events across Salisbury, in light of the recent incident. • A new event guide would be sent out to households over next few weeks. A copy of this would be brought to the next Area Board to attach to the minutes. • The next Mayor making for the city would take place on Sunday. <p><u>Laverstock and Ford Parish Council -</u></p> <ul style="list-style-type: none"> • The Parish Council was assisting where possible to promote the recovery plan for Salisbury. • Recently supported the teenage market • Held a lantern parade in the country park, involving all of the children and the developers. • The Country Park information event had been held in Bishopdown Farm. • Supporting events like Salisbury Live. • Had funded a more professional stage at the Community Farm. • The materials had arrived for the green space, and the final ground works had now re-commenced. • The PC was pressing developers to create adjoining paths. • Work on the Parish Plan continued. <p><u>Question:</u> Cllr Walsh noted that the PC hoped to take over the country park in May, he asked what the boundaries were, and would the PC put a map out for all to see? <u>Answer:</u> Yes it would once they had taken ownership of it.</p> <p><u>Police – Inspector Pete Sparrow</u></p> <p>Since I was here last we have had two major incidents to deal with, the snow on the A303 and then the poisoning in the City.</p> <p>The same officers have had to deal with both incidents, we have been incredibly proud of the way they had responded. There had also been a huge level of community support by the public to the Officers on the cordons.</p>

There had been a merge of the south Community Policing Team with Amesbury, this would provide a wider pool of officers, and was a natural fit which matched the demands across the areas. There were nine new Police Officers and four local crime investigators starting in June.

A crime statistic report had been published the previous week.

Community Speed Watch would be actively supported by Officers, who would go out and target the highest recorded areas for speeding.

Question: Cllr Dalton drew attention to the crime statistics on the handout, in comparison to those available on a BBC app, which detailed figures for specific areas. He noted that the figures for Salisbury on the app stated that recorded crime was up, however actual charges being brought against those people committing those crimes was down, with Wiltshire down 4500. Answer: I have not looked at how that data was collated. If they are not charged on the day of request they are released and sent a postal summons, and it did not say that those figures included summons.

Cllr Dean noted that on behalf of SCC and as a ward Councillor, we were incredibly thankful for all the Officers had done during the snow incident, then straight in to another major incident, of the poisoning.

The Chairman added that she was aware of how all agencies had been working well together.

Fire and Rescue – Jason Moncrieff

- The local station had been involved with providing accommodation to partner services including ambulance and police staff.
- The 4x4 had been used to get essential workers to their place of work during the snow incident.
- The Service had held a 10m road cycling race out of the fire station.
- Just hosted a NHS blood donation session from the fire station
- A Salamander course, was scheduled to be held from Amesbury fire station.
- A specific crew had received a letter of thanks from the Prime Minister.
- The second appliance had seen a dip in cover during the month of February, however this recovered in March.
- There would be two new whole time recruits to Salisbury before the end of June.

Thanks were given to the Fire Service for the amazing work during the recent two incidents.

Salisbury BID

The Chairman noted that they had been engaged in the recovery of the City. They had been carrying out work to measure visitors to Salisbury.

	<p><u>Community Engagement Manager – Karen Linaker</u></p> <ul style="list-style-type: none"> • It had been an intense period, with all partners working really hard. • Salisbury’s first Men’s Shed was coming together. • HWB group had market stalls to raise profile and attract volunteers. • There was an event planned at the Quaker meeting house in June – SWGS will be involved in that event. • The next Celebrating Age project would take place on 29 May, at the Methodist Church, Salisbury. • Next week was Dementia Action week, with events across the city taking place, and various organisations taking part. • A huge elite cycle race event would take place on 31 May. <p><u>Child Wellbeing Group – Cllr Douglas</u></p> <p>Work had been focused in the Friary, the Group had discussed moving to other areas but decided not to. The community foundation had found a large amount of money over 5 years, and decided to focus on families with children aged 0-5 years, as this had the greatest effect on those children and all involved with them.</p> <p>The group had been tasked to do communication, there were many websites, but, talking to those who work on the Friary with residents, they suggested Facebook as the most effective.</p>
96	<p><u>The New Role of the Police Fire Community Support Officers</u></p> <p>This item was cancelled as the speaker was unable to attend.</p>
97	<p><u>Health & Wellbeing (HWB) Update and Funding</u></p> <p>The Lead Member for Health & Wellbeing, Cllr John Walsh gave an update on behalf of the HWB Group.</p> <p>The Board then considered the recommendations for funding from the HWB Budget for 2018/19, as detailed in the attached report.</p> <p><u>Decision</u> The Salisbury Area Board awarded £1,500 to the Wiltshire Music Centre for the Celebrating Age project.</p> <p><i>Reason</i> <i>The project met the criteria for funding for 2018/19.</i></p> <p><u>Decision</u> The Salisbury Area Board refused the application from the Salisbury Pantry Partnership for the Brickworth Gardening project.</p>

	<p><i>Reason</i> The Board supported the HWB Groups view that this project would be more suited to funding support from the Community Foundation</p> <p><u>Decision</u> The Salisbury Area Board awarded £670 to the Wiltshire Racial Equality Council for the Open Blue Bus Day Out to Dairyhouse Bridge project.</p> <p><i>Reason</i> <i>The project met the criteria for funding for 2018/19.</i></p> <p><u>Decision</u> The Salisbury Area Board awarded £150 to Health & Wellbeing Group towards the Volunteering Week Plans.</p> <p><i>Reason</i> <i>The project met the criteria for funding for 2018/19.</i></p> <p><u>Decision</u> The Salisbury Area Board awarded £1,000 to the Older People’s Champion for the Sunday Programme of events.</p> <p><i>Reason</i> <i>The project met the criteria for funding for 2018/19.</i></p> <p><u>Decision</u> The Salisbury Area Board awarded £450 to the Salisbury Cathedral Outreach Programme for the Social Prescribing project.</p> <p><i>Reason</i> <i>The project met the criteria for funding for 2018/19.</i></p> <p><u>Decision</u> The Salisbury Area Board awarded £400 to the Resident Engagement Teams for the “Expo 55” Older People’s event.</p> <p><i>Reason</i> <i>The project met the criteria for funding for 2018/19.</i></p>
98	<p><u>Community Area Grants</u></p> <p>The Board considered five applications for funding from the Community Area Grant Scheme for 2018/19, as detailed in the agenda pack.</p> <p>Applicants present were invited to speak in support of their projects. Following discussion, the Members voted on each application in turn.</p> <p>Cllr Dean noted that the Community Kitchen application asked for above the standard £5,000 maximum usually considered by the Board. He recommended that a smaller amount of £5,000 be considered, this was seconded by Cllr Douglas.</p> <p>Cllr Rogers asked whether there was an organisation behind the application</p>

which would benefit from the project financially? Answer: We are a community interest company, the kitchen would be locked into our company, if we folded, any assets would need to be handed over to another group.

Decision

The Any Body Can Cook Community Interest Company was awarded £5,000 towards the Community Kitchen Project.

Reason – The application met the Community Area Grants Criteria 2018/19.

Cllr Hocking noted that he was disappointed when applicants were not present in person to support their applications when asking for funding.

The Chairman noted that the next applicant had also applied to the Southern Wiltshire Area Board and received funding of £1,625, as the club was accessed by both community areas.

Decision

The Salisbury City Marauders was awarded £1,625 towards the American Football Club project.

Reason – The application met the Community Area Grants Criteria 2018/19.

Cllr Rogers left the room for the next application as he had declared an interest at the start of the meeting.

The Chairman drew attention to the amount requested and noted that it was over the standard £5,000 that was usually considered as a maximum by the Board.

Cllr Walsh then moved the motion to award £10,000, this was seconded by Cllr Dalton. That motion was not carried.

Cllr Dean noted that the Studio Theatre was in his ward. The freehold was until recently in WC possession however had recently been handed over to the Theatre in an asset transfer. The Theatre had been productive in raising funds for the first 3 phases. He did not feel that there were special circumstances that would justify the Board going above the £5,000, so moved the motion of a grant of £5,000. This was seconded by Cllr Douglas.

Decision

The Studio Theatre company was awarded £5,000 towards the Theatre Extension Project.

Reason – The application met the Community Area Grants Criteria 2018/19.

Decision

The South Wilts Cricket Club was awarded £2,500 towards a new artificial cricket wicket.

Reason – The application met the Community Area Grants Criteria

2018/19.

The next application had already been to Southern Wiltshire Area Board, as the applicant had been wrongly directed to that community area for funding. The site the path was on was within the part of the Riverdown development that sat within Cllr Brown's ward, and therefore this application was now for consideration by Salisbury Area Board.

The Board discussed the appropriate route for funding a path scheme such as this. It was felt that the Area Board may not be the right place to fund it.

Cllr Brown noted that the he had been to the path and was in support of the work to finish off the path to improve safety, however was also unsure whether the Community Grant pot was the correct way forward.

The CEM clarified that the Board had discretion to fund out of any pot, if it felt there was good justification to support the decision. The CATG and LYN sub Groups did not have decision making powers and made recommendations to the Board for ratification.

The Vice Chairman of Laverstock and Ford PC noted that they had been told that the Paths Improvement Grant Scheme (PIGS) had been moved in to the Boards remit, so it was them that could make the decision.

Cllr Dean noted that the PIGS pot had been discontinued and in future, path projects would need to be funded by discretionary grants from Boards or PCs. He felt that the two bodies that should step up to the plate for this were CATG and the PC. He added that he would prefer this money to be spent on properly constituted community groups.

Cllr Hocking as Chairman of the CATG added that he would struggle to support funding the project from the CATG budget given the small amount they had for the year.

The Board had worked with Officers to produce a list of pavements across the community area, in need of repair over the last year and funding had already been allocated to those works.

Cllr Walsh felt that the project did have a strong community interest, and would be of benefit to young people.

The applicant confirmed the community value for the area, as the project would benefit the 450 children at the school, and a new autism unit. The path was owned by Riverdown Park.

The Chairman moved the motion to award a token amount of £1,000, this was seconded by Cllr Brown.

	<p><u>Decision</u> Laverstock & Ford Parish Council was awarded £1,000 towards the resurfacing of a hoggin path extension to Greentrees Junior School.</p> <p><u>Reason</u> – <i>The Board was keen to prioritise small community groups, especially as the grant pot was reduced from last year. Even if councillors were minded to fund a footway, there was already a backlog of pavements which councillors had identified as in need of repair. The Board agreed to fund a contribution, noting that this was the third time the applicant had applied to an Area Board, and that it had met with barriers in accessing funding.</i></p> <p><i>Note: Cllr Dean agreed to check whether SCC had ever received developer contributions from the site and if so would then invite an application for funding to SCC. If however it was found that the developer contributions had gone to L&FPC, he suggested that they reconsider funding the remainder of the project from that.</i></p>
99	<p><u>Close</u></p> <p>The Chairman thanked everyone for attending and noted that the next meeting of the Salisbury Area Board would be held on Thursday 5th July 2018, 7.00pm at City Hall, Salisbury.</p>
<p><u>Additional Papers: Electoral Review Handouts</u></p>	

This page is intentionally left blank

Electoral Review Information

Background

1. Electoral Reviews determine both the overall number of councillors on a council, and the pattern of divisions within that council.
2. The current review is the first review since Wiltshire Council was formed in 2009.
3. It was required because 25 Divisions had a variance from the average in the size of their electorate of more than 10%, and 2 Divisions had a variance from the average of over 30%.
4. The review's outcome, if implemented, will apply from the next elections in May 2021.
5. **Parliament, not Wiltshire Council, will be responsible for the final decision, following a recommendation from the Local Government Boundary Commission for England (LGBCE).**

Preliminary Phase

6. Wiltshire Council formed an Electoral Review Committee to prepare any submissions to and make any comments in relation to the Electoral Review on its behalf. The preliminary phase is about to conclude, and relates to the overall size of the council.
7. The criteria for assessing the most appropriate council size includes consideration of the government arrangements of the council (eg how many councillors it needs to efficiently conduct its business), the scrutiny arrangements of the council (eg to ensure there are sufficient councillors to hold the executive to account) and the representational role of councillors. The number must be that which is considered best for effective and convenient local government.
8. **The Electoral Review Committee considered a great deal of evidence, and recommended to Full Council that a council size of 99 be submitted to the LGBCE. This was approved on 20 February 2018.**
9. The decision of the LGBCE will be announced shortly. Even if the council size remains relatively unchanged, there will need to be significant changes to the shape of current divisions, due to population changes.

Next Phase

10. After announcing its decision on council size, the LGBCE will hold a public consultation.

11. The consultation will seek proposals from the council, towns and parishes, other community or local groups, and members of the public, on how the determined number of divisions should be drawn up.
12. **Anyone who wishes to make a representation on the pattern of divisions should contact the LGBCE directly via their website - <http://www.lgbce.org.uk/all-reviews>**
13. There will be a briefing for parishes from the LGBCE, with the date still to be confirmed.
14. Wiltshire Council also welcomes any submissions from parishes or the public, to assist it in drawing up its own proposals. **Anyone who wishes to share their views on a submission with the council should email committee@wiltshire.gov.uk**

Submission Details

15. Anyone commenting on proposed divisions or making their own submissions, should be aware of the criteria for assessment of said divisions, as detailed below:

Electoral Equality - Any submissions made will be required to seek to create divisions as close as possible to the average figure of electors per division (not total population per division) identified by the LGBCE when making their decision on council size.

Interests and identities of local communities - this means establishing electoral arrangements which, as far as possible, avoid splitting local ties, and where boundaries are easily identifiable.

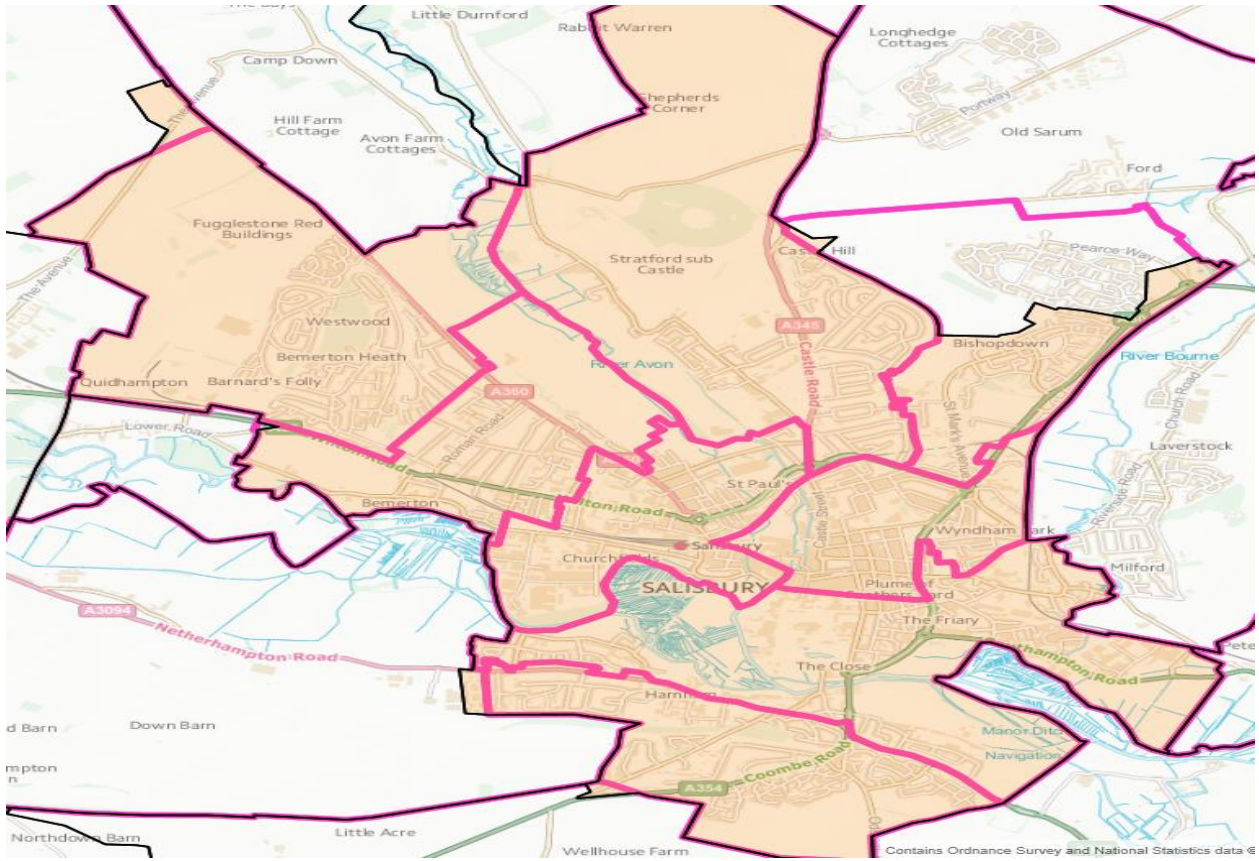
Effective and convenient local government - this means ensuring that the divisions can be represented effectively, and that the electoral arrangements as a whole, allow the local authority to conduct its business effectively.

16. Localised submissions from organisations and communities may justify a level of variance from the average electorate figure, but this would need to be supported by clear evidence.

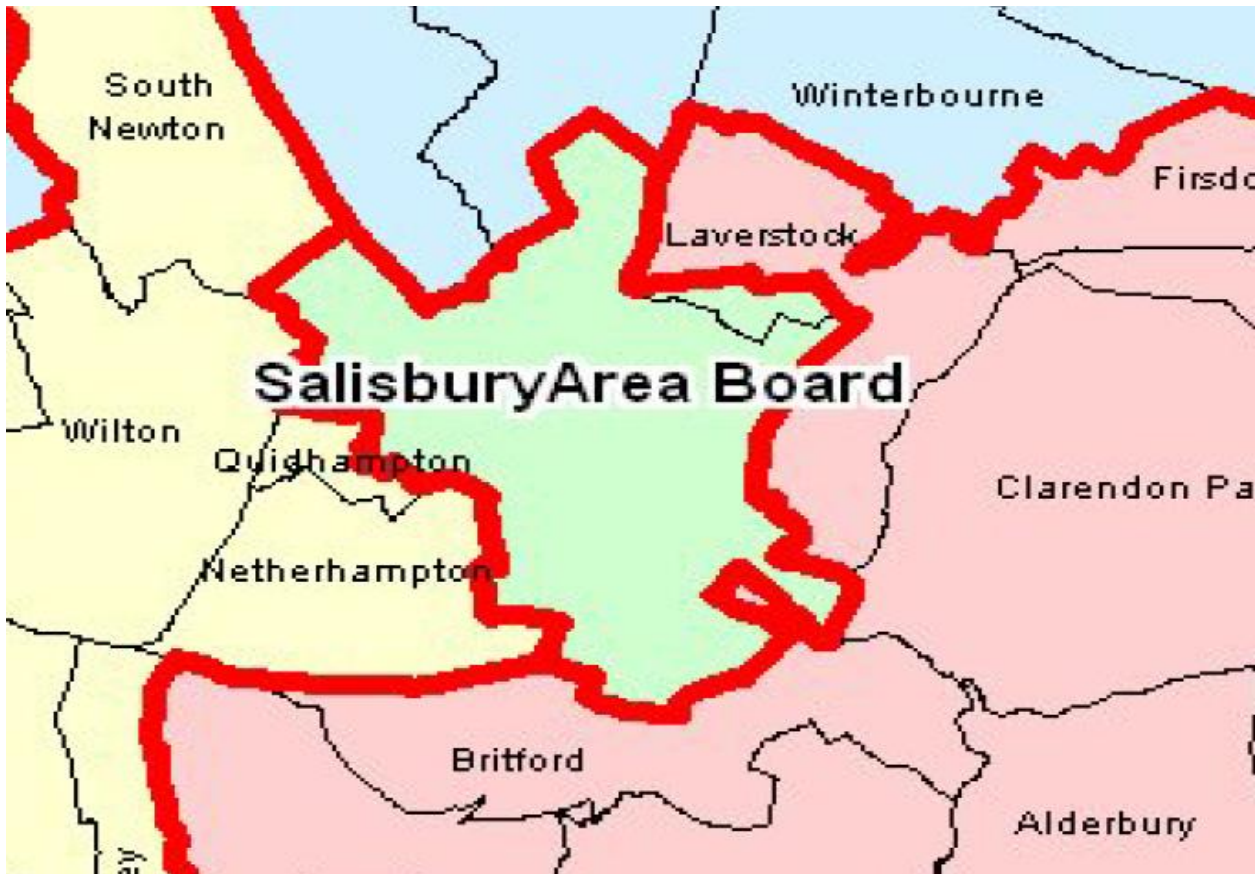
Salisbury Area Board

17. A map of the current community area boundaries, and the parishes and electoral divisions contained therein, is shown overleaf.
18. **While the Electoral Review Committee is minded to try to recommend new divisions which accord to the current community area boundaries, unless there are justifiable requests to do otherwise, the need to have electorally equal divisions may mean the LGBCE decide it is necessary to create divisions which go beyond the current boundaries. This could be by combining whole parishes or parts of parishes.**

Salisbury Area Board¹



Neighbouring Area Boards



¹ Shaded area, plus bishopdown estate, minus a few areas transferred from other parishes to Salisbury

Key facts and figures

19. The current electorate for the Salisbury Community Area is **31774**, with 8 electoral divisions.
20. The average division size at present across the council area is **3752**.
21. The projected electorate for the Salisbury Community Area in 2024 is **36443**. **The number is presently draft only.**
22. Below are listed the draft figures for the projected electorates for the current pattern of division in 2024. These may be subject to some change. **Please note some of the existing divisions contain parts of other parishes.**

Divisions

Salisbury Bemerton – 6139
Salisbury Fisherton and Bemerton Village – 3567
Salisbury Harnham – 4487
Salisbury St Edmund and Milford – 4263
Salisbury St Francis and Stratford – 4366
Salisbury St Mark's and Bishopdown – 4437
Salisbury St Martin's and Cathedral – 4348
Salisbury St Paul's – 4844

Parishes

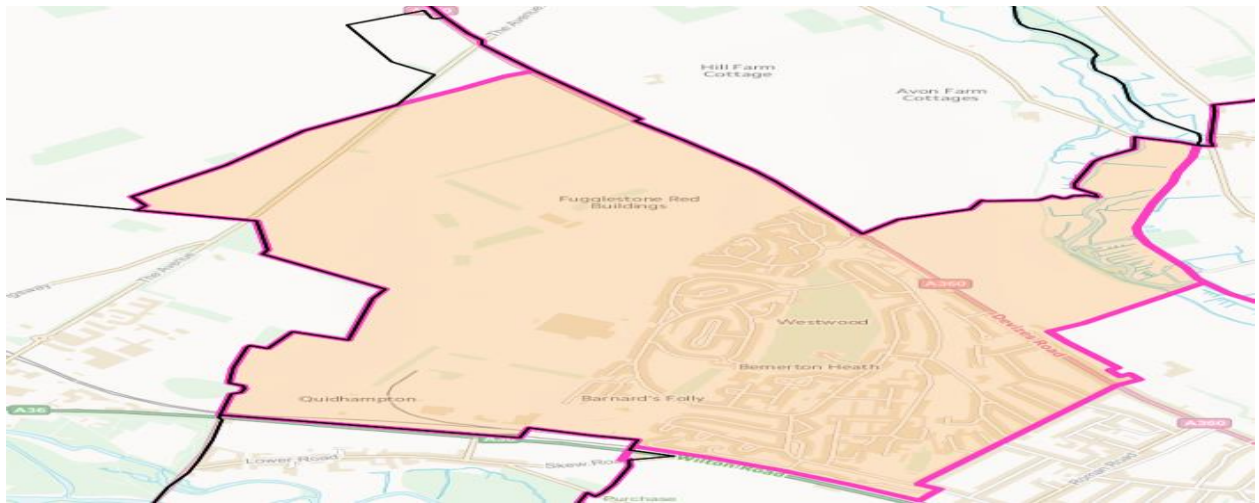
Salisbury – 33970 (not including 264 of the parish currently inside other Area Boards)
Laverstock (within Salisbury Area Board) – 2473

It is these number that the LGBCE will use to create new divisions. They may use parts of parishes, and may not utilise existing area board boundaries.

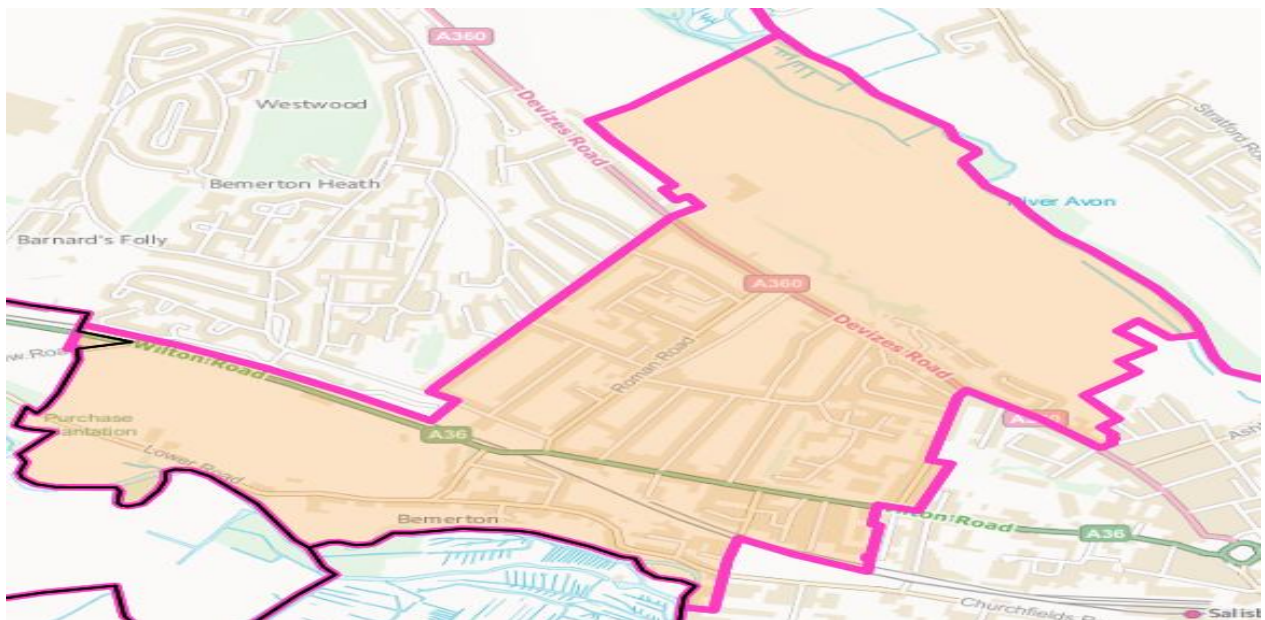
23. Overleaf are maps of the existing divisions.

Current Division Maps

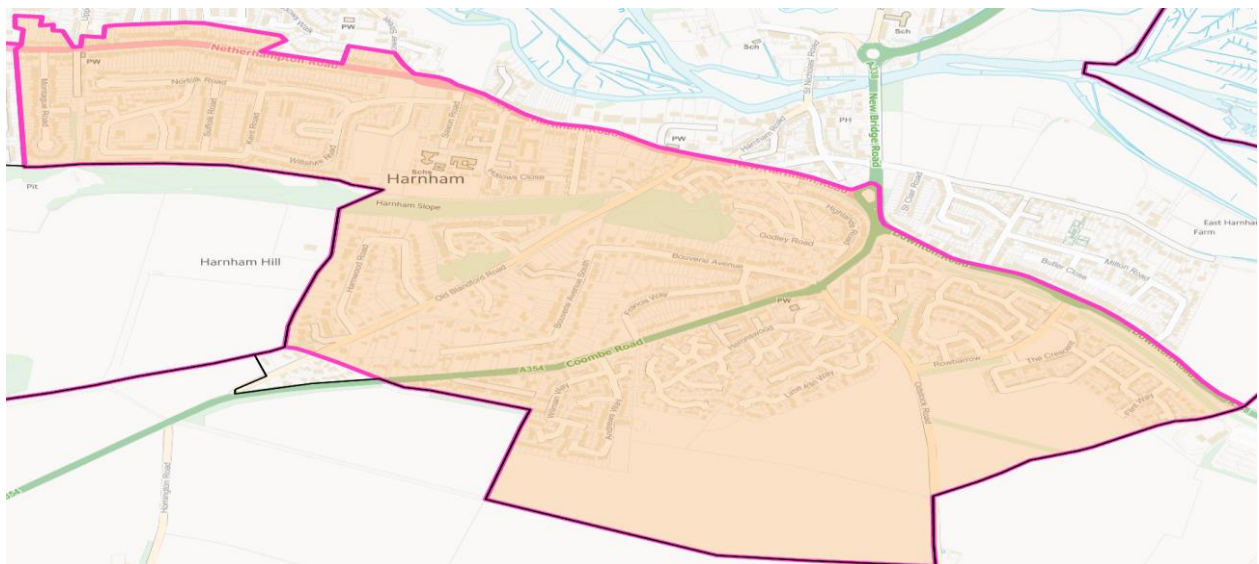
Salisbury Bemerton



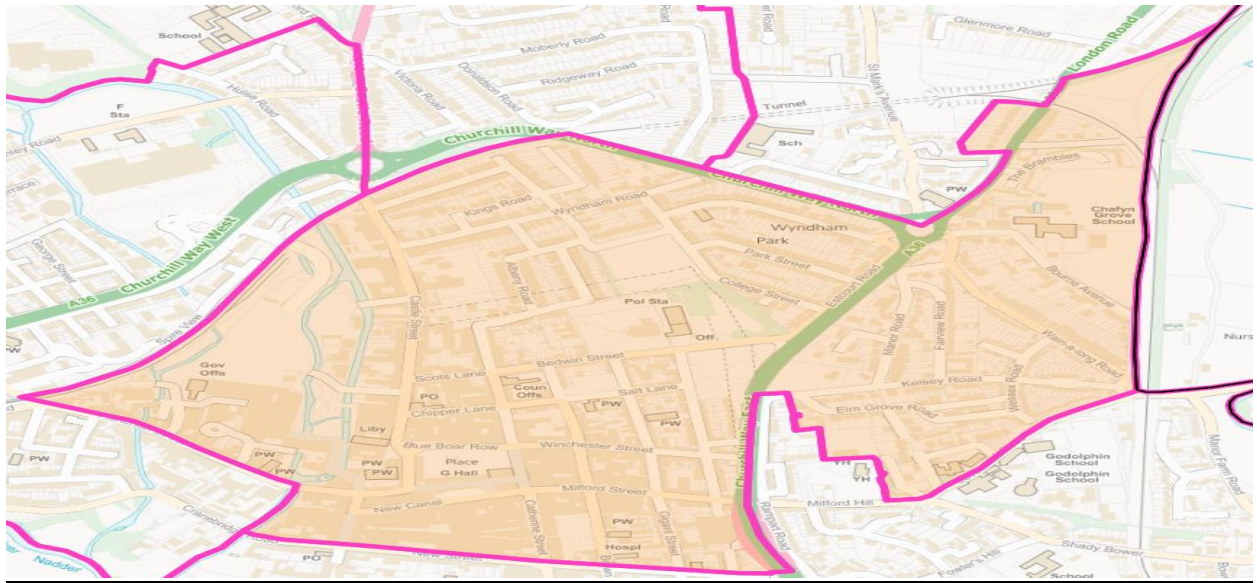
Salisbury Fisherton and Bemerton Village



Salisbury Harnham



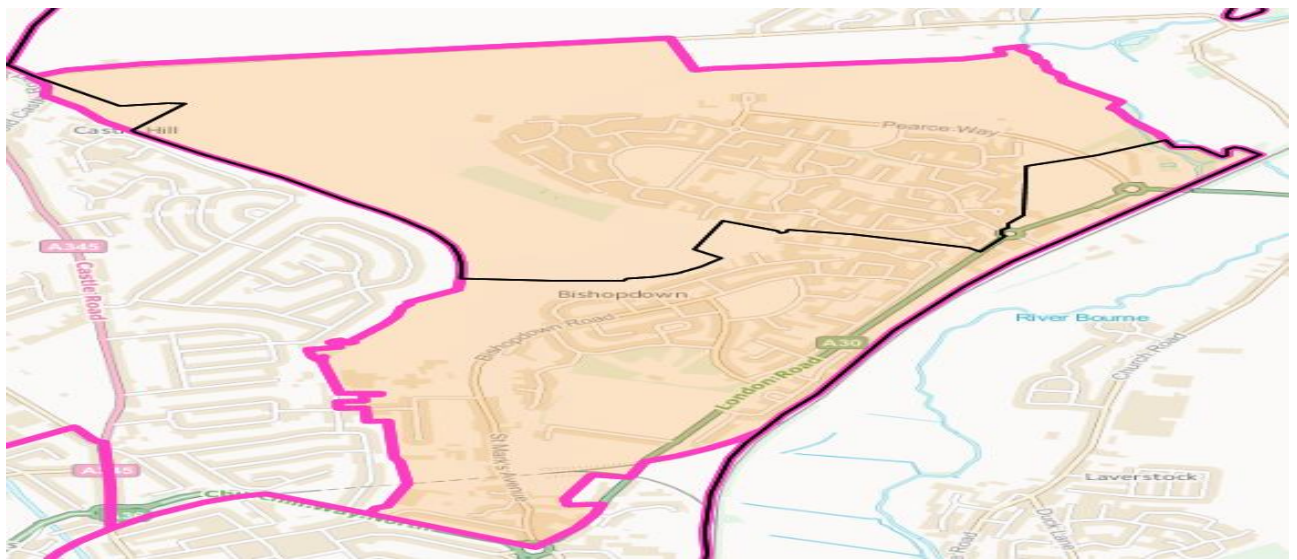
Salisbury St Edmund and Milford



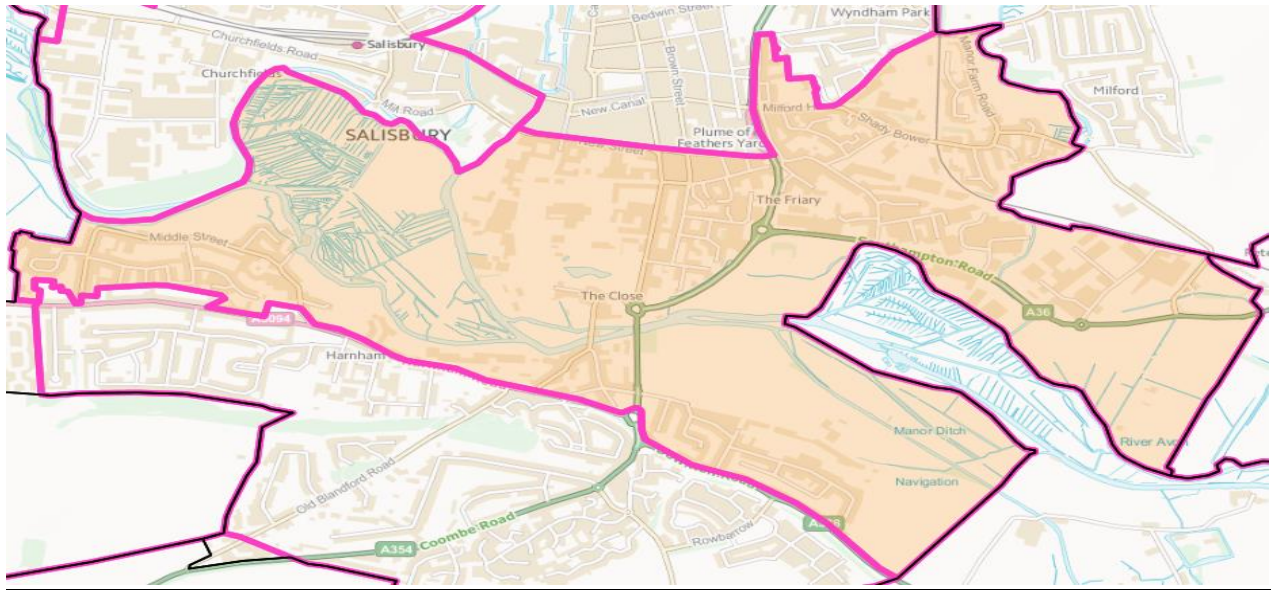
Salisbury St Francis and Stratford



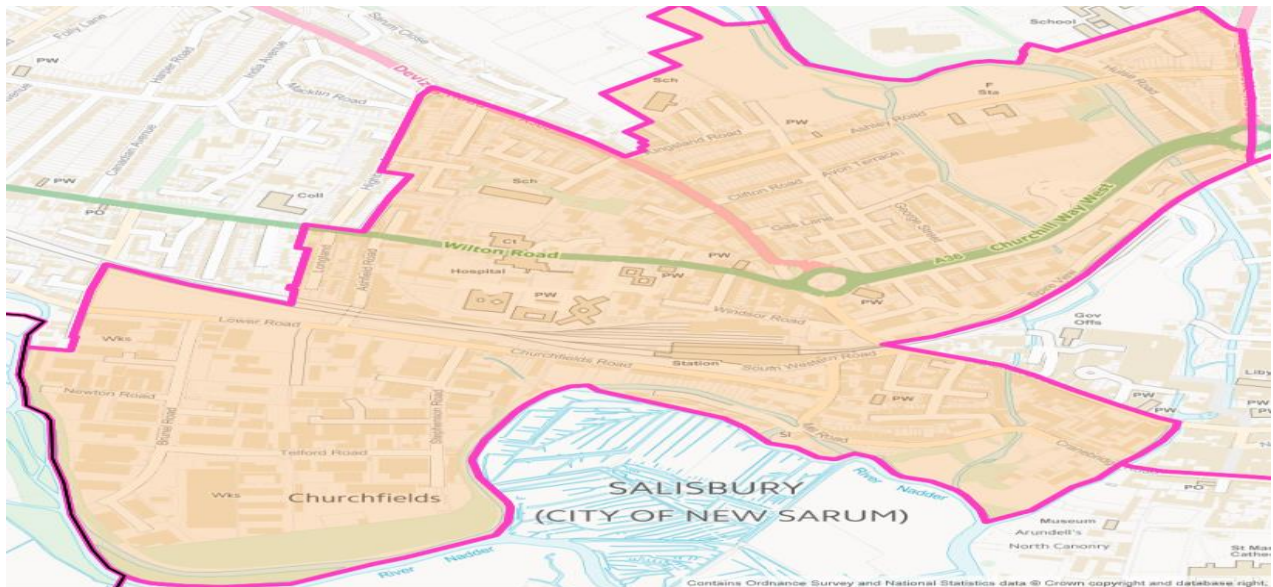
Salisbury St Mark's and Bishopdown



Salisbury St Martin's and Cathedral



Salisbury St Paul's



Future Stages

24. Some time after the next stage the LGBCE will consult upon its draft recommendations on new divisions, published after considerations of the submissions that have been made.
25. Area Boards will again be consulted at this stage, and the Electoral Review Committee will consider a response to the draft recommendations
26. Sometime in 2019 the final recommendations of the LGBCE will be published. They will be laid before Parliament, where the recommendations may be accepted, or rejected, but not amended.

This page is intentionally left blank